



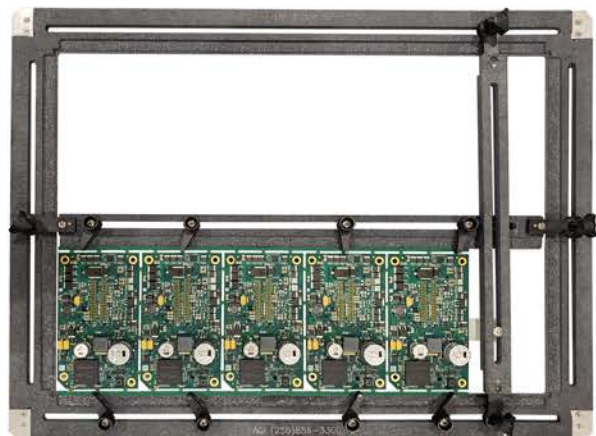
Adjustable Wave Solder Pallet

Adjustable Wave
Solder Pallet

AGI has an Adjustable Wave Solder Pallet that can accommodate most PCB's and Components! This Pallet is perfect for unique sized PCB's and connectors that overhang the Board edge making it difficult to support.

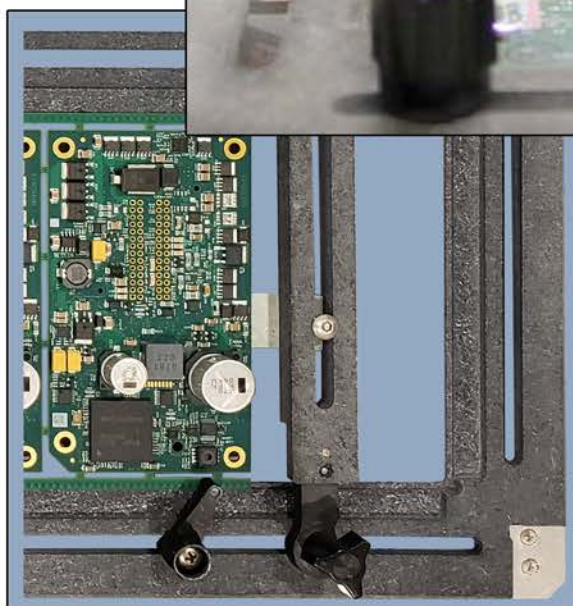
AGI's pallet features Sliding Board Hold downs you can place anywhere along the pallet edge. The hold downs accommodate PCB's from .031"-.093" thick. The pocket design allows connectors to overhang the PCB up to 3/8". One piece frame construction eliminates seams and racking in the corners.

Great for Prototyping and low quantity runs!



FEATURES and BENEFITS

- One piece construction eliminates seams, racking and loosening in corners.
- Available in three standard sizes:
 - Outer pallet dimensions 17.0"W x 20.0"L
Accommodates a PCB up to 12.75"W x 16.0"L
 - Outer pallet dimensions 15.0"W x 20.0"L
Accommodates a PCB up to 10.75"W x 16.0"L
 - Outer pallet dimensions 11.0"W x 17.0"L
Accommodates a PCB up to 8"W x 14.0"L
- Rails feature AGI's unique adjustable Board Hold-Downs. Sliding design allows the user to position the hold-downs anywhere along PCB edge.
- Includes (1) Adjustable rail with AGI's sliding hold-downs.
- PCB support edges are .062" wide. AGI's step cut allows connectors to overhang the PCB edge up to 3/8".
- Board hold-downs will accommodate a .031-.093 thick PCB



AGI Corporation

www.AGICorp.com - info@AGICorp.com

177 Nick Fitchard Road • Huntsville, AL 35806 • (256) 858-3300
13540 Wright Circle • Tampa, FL 33626 • (813) 343-3007