

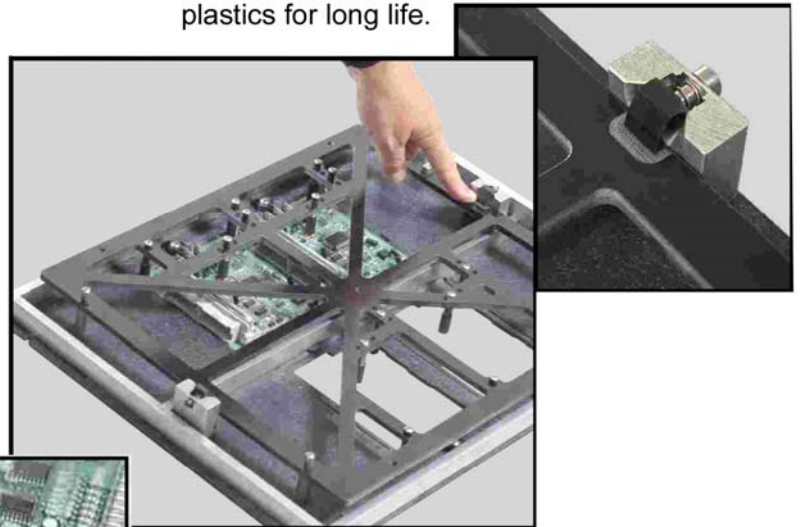
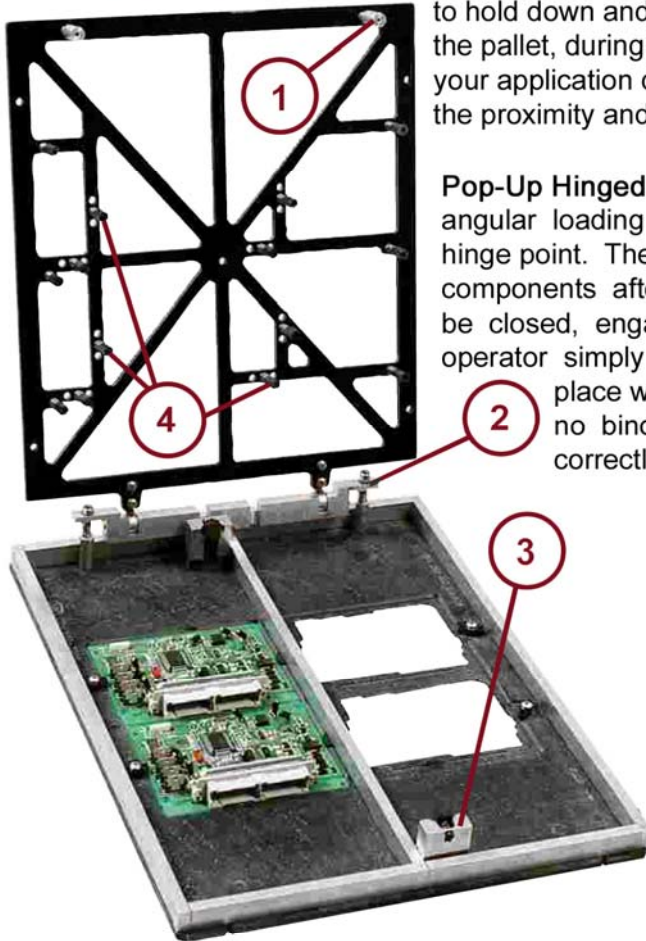


Canopy Systems

AGI offers three Canopy systems for the PCB manufacturer who needs to hold down and/or align components, connectors or mask openings in the pallet, during the Wave Solder process. Which approach is best for your application depends upon the ergonomics of your application, and the proximity and types of components you need to hold down.

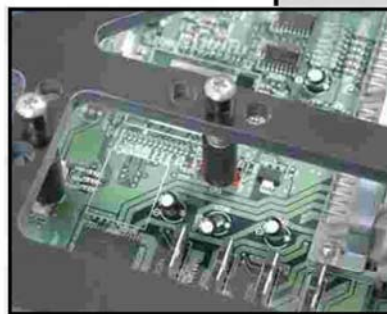
Pop-Up Hinged Canopy eliminates the problems associated with the angular loading of the component hold down tooling due to the fixed hinge point. The pop-up mechanism keeps the canopy up above the components after it has been swung over. This allows the canopy to be closed, engaging the components, in a true vertical motion. The operator simply presses downward and the canopy is locked into place with the two Slam Latches. This approach ensures that no binding occurs and the components on the PCB are correctly seated and aligned with a true vertical motion.

All of our canopy systems feature our **Slam Latch**. The latch allows for an easy snap in place and release, without the repetitive motion of rotary hold downs. The latch is a spring loaded mechanism, and is injection molded from our high temperature ESD safe plastics for long life.



Pop Up Canopy System Raised Position

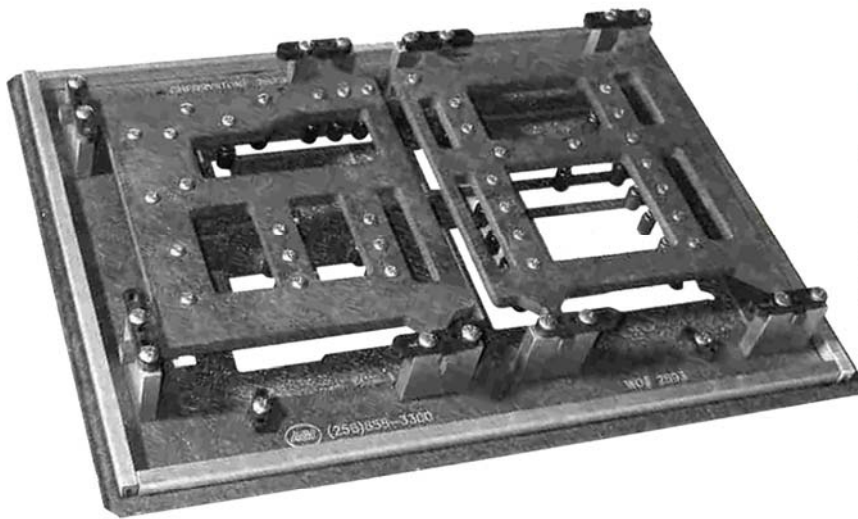
1. (2) Spring Loaded (Feet)
2. Spring Loaded Hinge Assembly
3. (2) Slam Latch Assemblies
4. Component Hold Downs



Lid Plunger Pushes Straight Down without Sliding across Component

AGI's canopy systems also feature our spring loaded Plunger Hold Downs.

Other Canopy Solutions



Removable Canopy

This is our lowest cost approach and gives the user the ability to create true vertical motion. The canopy can be locked in place with either **Rotators** (shown) or our **Slam Latches** for easy snap in place. The canopy is keyed to ensure it is in position prior to touching any components.

Hinged Canopy

Features our **Slam Latches** for easy snap in place. The canopy may include radiused plungers to reduce any binding as the lid is swung into position. This type of canopy is best for; holding down the PCB, or masking the PCB and connector hold downs that are located greater than 4" – 6" from the hinge point.



AGI's Canopies are typically fitted with tooling to properly seat and align connectors, capacitors and other components that need to be secured, orientated or aligned, during the wave solder process. Consult with your AGI Sales Representative to find out which approach is best for your application.

AGI Corporation

www.AGICorp.com - info@AGICorp.com

177 Nick Fitchard Road • Huntsville, AL 35806 • (256) 858-3300 • Fax: (256) 858-3304